

- FW= Frame width  
Min. 1800 / max. 3000  
 $FW=2COW+88+X$
- FH= Frame height  
Min. 1900 / max. 3000
- X= Distance to avoid finger trap (100 mm)  
Distance to avoid head trap (200 mm)
- COW= Clear opening width  
 $COW=(FW-88-X)/2$
- COH= Clear opening height  
 $COH=FH$
- CL= Cover length

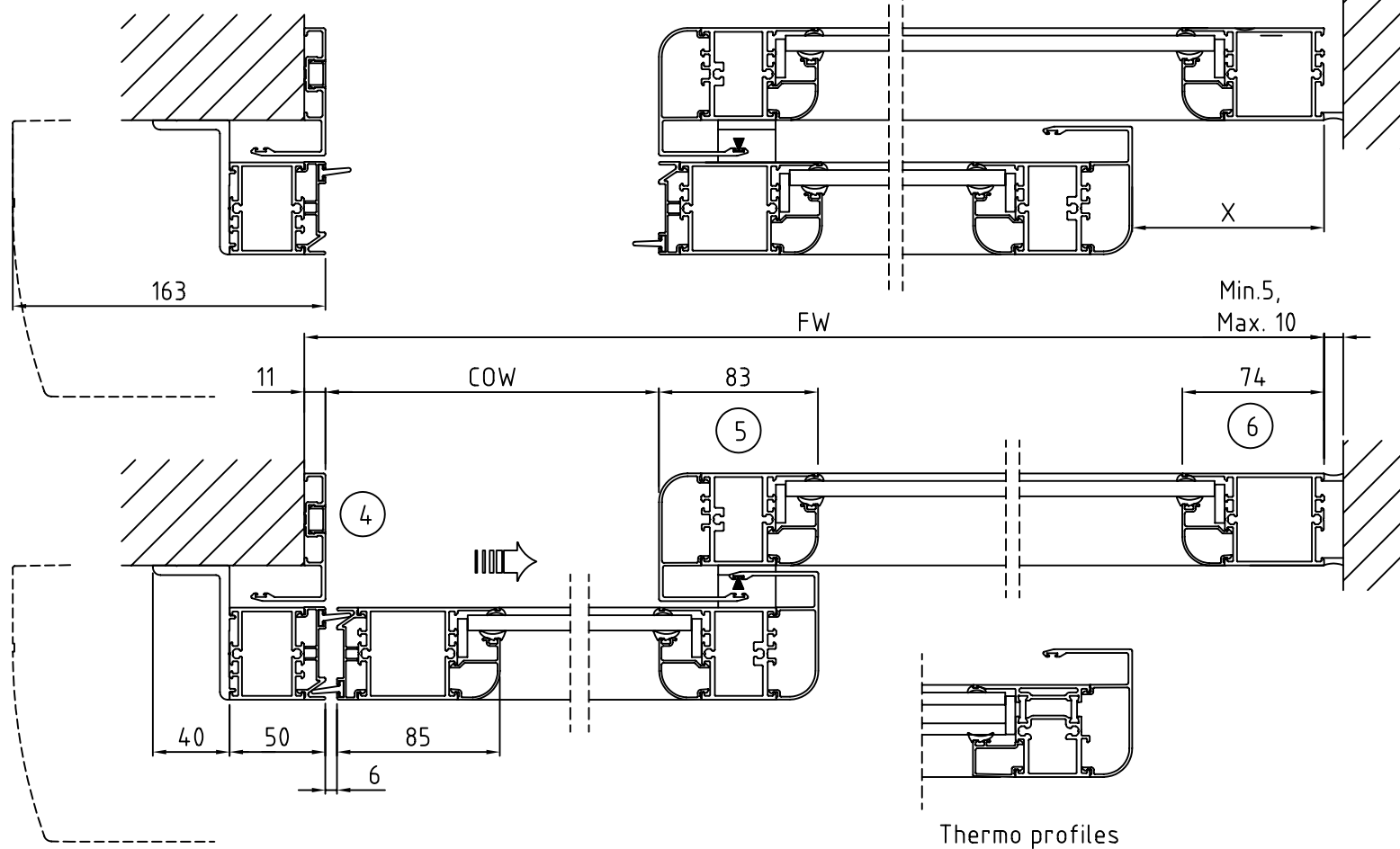
- State when ordering
- FW=.....mm
  - FH=.....mm
  - X=.....mm
  - COW=.....mm
  - COH=.....mm
  - Cover Yes
  - CL=.....mm
  - Midrail 70 Yes
  - Midrail 150 Yes
  - MH=.....mm
  - Bottom rail 178 Yes

- Surface treatment
- Silver anodized
  - Special anodized.....
  - RAL.....
  - Special powder coating.....

- Glass
- 6 mm laminated glass
  - 8 mm laminated glass
  - 6 mm tempered glass
  - 8 mm tempered glass

- (Rectangular glazing beads)
- 6/10/6 mm Insulated lam. glass
  - 8/24/8 mm Insulated lam. glass
  - Thermo profiles

- Lock
- ASSA 2-way Yes
  - Euro 1-way Yes
  - Euro 2-way Yes



Scale 1:5

Customer: \_\_\_\_\_

Door id: \_\_\_\_\_

Project No: \_\_\_\_\_

Besam ref: \_\_\_\_\_

Date: \_\_\_\_\_

Sign: \_\_\_\_\_

**ADS Automatic door system**  
**Frame UniSlide**  
**2 Panel wall mounted right**  
**Article No. 800057**

**besam** 

F **832970**