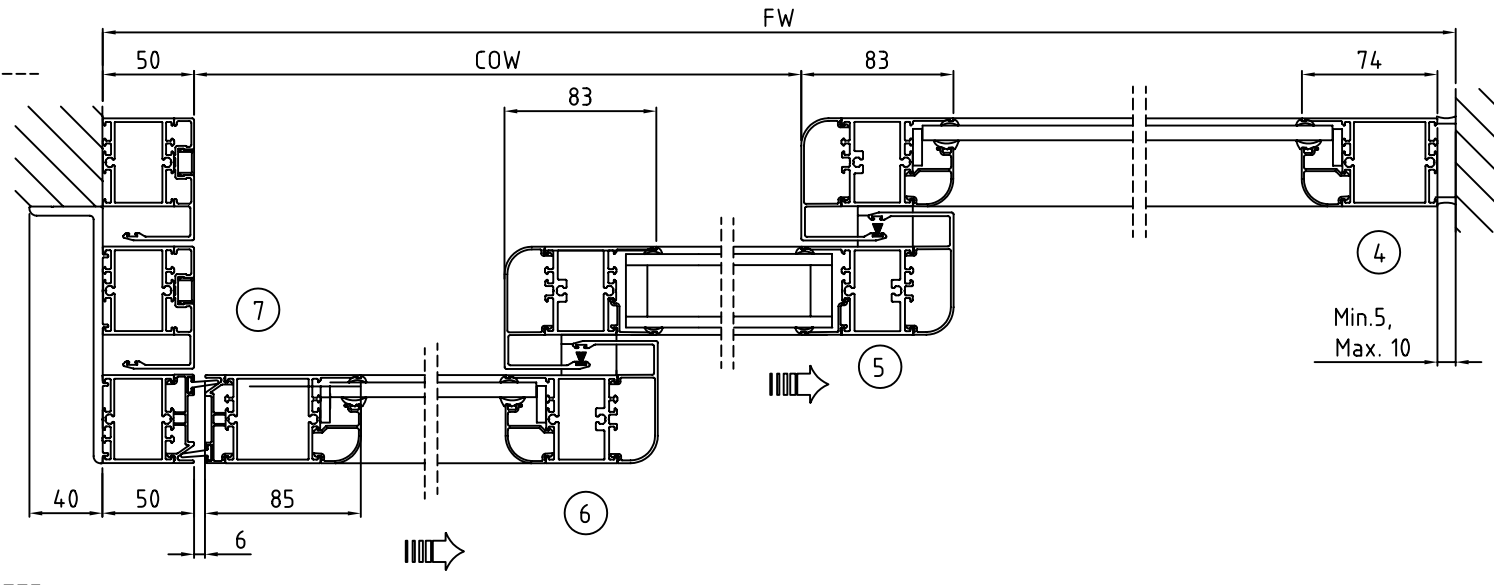
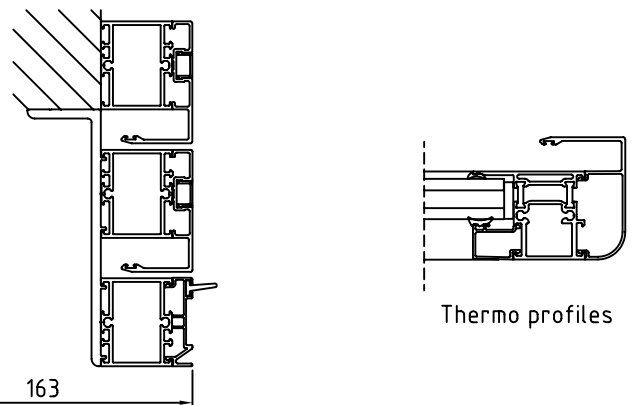
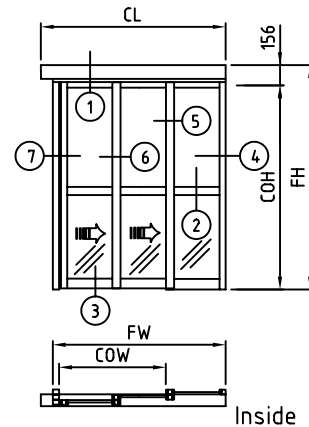
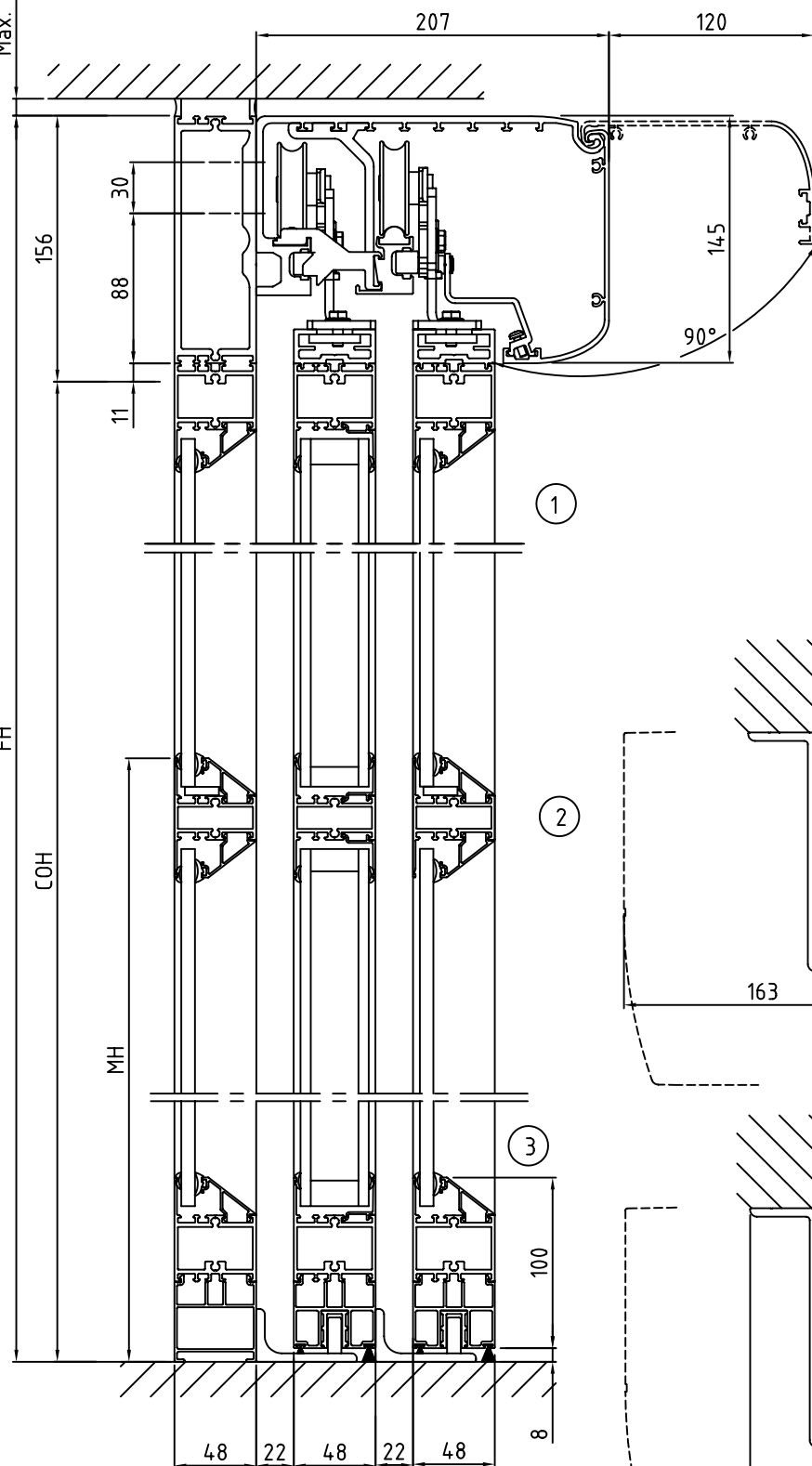


Min. 5,  
Max. 10



FW= Frame width  
Min. 1600 / max. 4800  
FW=1,5COW+131+X

FH= Frame height  
Min. 2050 / max. 3150

X= Distance to avoid finger trap (100 mm)  
Distance to avoid head trap (200 mm)

COW= Clear opening width  
COW=(2FW-2X-262)/3

COH= Clear opening height  
COH=FH-156

CL= Cover length

State when ordering

- FW=.....mm
- FH=.....mm
- X=.....mm
- COW=.....mm
- COH=.....mm
- Cover Yes
- CL=.....mm
- Midrail 70 Yes
- Midrail 150 Yes
- MH=.....mm
- Bottom rail 178 Yes

Surface treatment

- Silver anodized
- Special anodized.....
- RAL.....
- Special powder coating.....
- .....

Glass

- 6 mm laminated glass
- 8 mm laminated glass

(Rectangular glazing beads)

- 6/10/6 mm Insulated lam. glass
- 8/24/8 mm Insulated lam. glass
- Thermo profiles

Lock

- ASSA 2-way Yes
- Euro 1-way Yes
- Euro 2-way Yes

Customer: \_\_\_\_\_

Door id: \_\_\_\_\_

Project No: \_\_\_\_\_

Besam ref: \_\_\_\_\_

Date: \_\_\_\_\_

Sign: \_\_\_\_\_

**ADS Automatic door system**  
**Frame telescopic UniSlide**  
**3 Panel beam mounted right**  
**Article No. 800160**



F 832992